

Universal wall mount, up to VESA 600x400mm, max. 125kg

With the easy and quick fixation system, this wall mount guarantees safe usage in environments like schools and other public utility buildings.

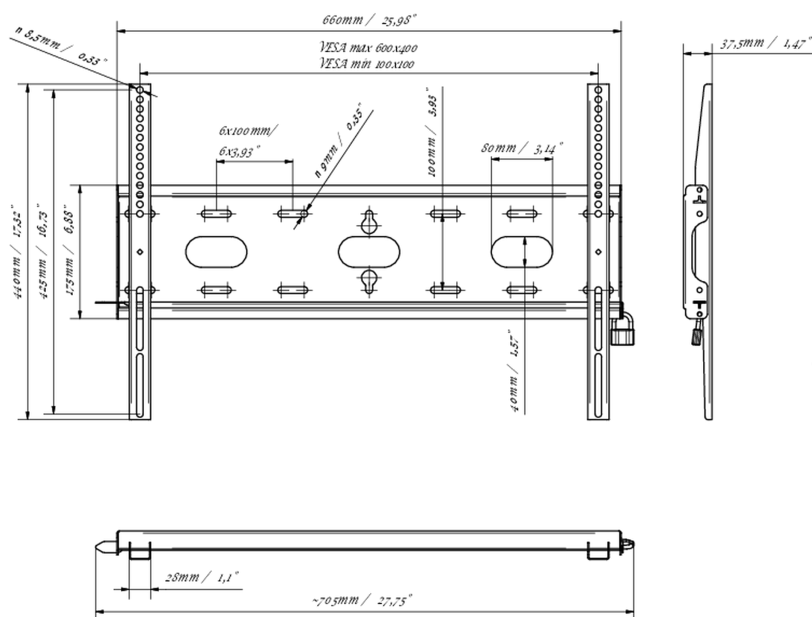
01 DEVICE

Type Wall Mount

02 TECHNICAL SPECIFICATION

Max weight capacity	125kg / monitor
VESA minimum	100 x 100mm
VESA maximum	600 x 400mm

A technical line drawing of a metal bracket. The bracket has a long, narrow body with several oval-shaped mounting holes along its length. At one end, there is a locking mechanism consisting of a small rectangular plate with a circular hole, and a larger rectangular plate with a circular hole and a small rectangular slot. The bracket is shown in a perspective view, angled upwards and to the right.



Product dimensions W x H x D	660 x 440 x 37.5mm
Box dimensions W x H x D	690 x 220 x 40mm
Weight (without box)	2.3kg
Weight (with box)	3kg
EAN code	5902841107106

Technical drawing of the HD-WH940 monitor stand, showing front, side, and perspective views with dimensions in mm and inches.

Front View Dimensions:

- Top width: 660 mm / 25.98"
- Top width (VESA max 600x400): 600 mm / 23.62"
- Top width (VESA min 100x100): 100 mm / 3.94"
- Left side height: 440 mm / 17.32"
- Left side height (adjustable range): 425 mm / 16.73"
- Left side height (adjustable range): 175 mm / 6.89"
- Right side height: 100 mm / 3.94"
- Right side height (adjustable range): 50 mm / 1.97"
- Right side height (adjustable range): 40 mm / 1.57"
- Bottom width: ~705 mm / 27.75"
- Bottom width (adjustable range): 25 mm / 1.1"

Side View Dimensions:

- Top width: 375 mm / 14.76"

Perspective View:

- Shows the stand's profile and the VESA mounting plate.

© IIYAMA CORPORATION. ALL RIGHTS RESERVED